

NAME: *Euonymus occidentalis* Nutt.
ex Torr.

EXTRACTOR: Kupchan

FAMILY: *Celastraceae*

DISTRIBUTION:

Genus:

Species:

FOSI

STATUS:

Date:

ONS:

Preliminary Active:

Confirmed Active:

ACTIVE SAMPLE:

Content:

3.05 lb. tw-lf-fl(bud)

Source:

California

SPJ-1925

Date of Collection:

5/ 1/71

Number:

PR-21215

RECOLLECTION:

PR No.:

Content:

Date:

Source:

21216

7 1/2 # ws-st

5/71

Calif.

SPJ-1925

Kupchan

22662

4 # st

10/71

"

SPJ-2040

"

22663

7 # tw-lf-fr

"

"

"

"

K.O.K (ia)

NAME: *Euonymus kiautschovica*
FAMILY: *Celastraceae* Loes.

EXTRACTOR: Warf
Recol: Kupchan

DISTRIBUTION:

Genus:

Species:

PRIORITY: L

STATUS:

Date:

ONS:

Preliminary Active:

Confirmed Active: ~~H-PS~~

IC-PS, 11-14-74 Cum. List 64

ACTIVE SAMPLE:

Content: 3.25 lb. tw-lf

Source: Chico-229 (Location R-8)

Date of Collection: 1/67

Number: PR-12585

B-636311

Poplar Bluffs Nursery:
name tag: *E. patens*
parrifolia

RECOLLECTION:

PR No.:

Content:

Date:

Source:

PR-20373 3 3/4 # tw-lf-fr (Poplar Bluffs Nursery, Mo.)

20372
20374
20375

CBJ-37 10/70

PR-86826 264 # Tw-lf Md. (M-4073) 6/75 Kupcha

2-14-74. Phone call from Kupchan. Needs large recol.

2-7-75 ltr to Carl Orndorff (Kalmia Farms, Clarksville, Md.). He will send trimmings (st-lf) late Mar. or early April. He will charge us for labor for drying. Per Orndorff phone: *E. sieboldianus* is also *E. kiautschovica*. Asked him to send specimen for id. He said there is great confusion in naming this and has tried to resolve it previously.

5-1-75 ltr from A.R. Braafman (Kup's off) - still needs recoll.

E. sieboldianus probably synonym for *E. kiautschovica* (see Gade)

Douros ltr 3-17-76 - Kup. needs recoll. (L)

- Regel) Brs. not or slightly winged: laxer in habit than the typical form.
2. *Euonymus grandiflora* Wall. 大花衛矛 (Ta Hua Wei Mao) (R.M. 558). Shrub or tree, to 10 m.; fls. white, VII; fr. IX, with scarlet aril. Himalayas, China; locally in An., Che., Ki., Ku. Forest.
 3. *Euonymus bungeana* Maxim. 絲綢木 (Ssü Mien Mu; Silk-wadding Wood) (R.M. 557). Shrub or tree, to 6 m.; fls. V-VI; fr. X, with orange aril, open at apex. Central and north China, Manchuria; locally in An., Che., Ki., Ku. Thickets, woodland.
 4. *Euonymus oxyphylla* Miq. (R.M. 558). Shrub or tree, to 8 m.; fls. greenish brown, V; fr. dark red, IX. Japan and China; locally in An., Che. Forest.
 - 5. *Euonymus klautschovica* Loes. 翠綠絲綢木 (P'an Yuan Ssü Mien Mu; Climbing Silk-wadding Tree) (R.M. 558). Shrub, sometimes climbing; fls. white, 8 mm. in diam., VII-VIII; fr. X-XII. Eastern and central China; locally in An., Ki., Ku. Woodland.
 6. *Euonymus japonica* Thunb. 大葉黃楊 (Ta Yeh Huang Yang; Large-leaved Buxus) (R.M. 558). Shrub or tree, to 8 m.; fls. VI-VIII; fr. X, with orange aril. Introduced from Japan; locally in An., Ku. Planted, ornamental.
 7. *Euonymus fortunei* (Turcz.) Hand.-Mazz. 扶芳藤 (Fu Fan T'eng; Supporting fragrant Vine) (R.M. 559). Climbing shrub; fls. V; fr. X. Central China; locally in An., Che., Ki., Ku. Woodland.

97. STAPHYLEACEAE BLADDERNUT FAMILY 省沽油科 (Shêng Ku Yu K'o)

Deciduous trees or shrubs with opposite *pinnate* stipulate *lvs.* and perfect *regular* fls.: infl. in panicles: stamens 5, at the edge of a disk; ovary 3-1-celled: fr. a capsule or pod with 1-few seeds in each cell. 6 genera with about 25 species, of north temperate regions: 4 genera and 6 species in China.

KEY TO THE GENERA

- Fr. a leathery pod; seeds with a thin aril: lfts. 7-11 1. *Euscaphis*
 Fr. an inflated capsule; seeds without aril: lfts. 3-7 2. *Staphylea*

1. *Euscaphis* Sieb. & Zucc. 野鴨椿屬 (Yeh Ya Ch'un Shu)

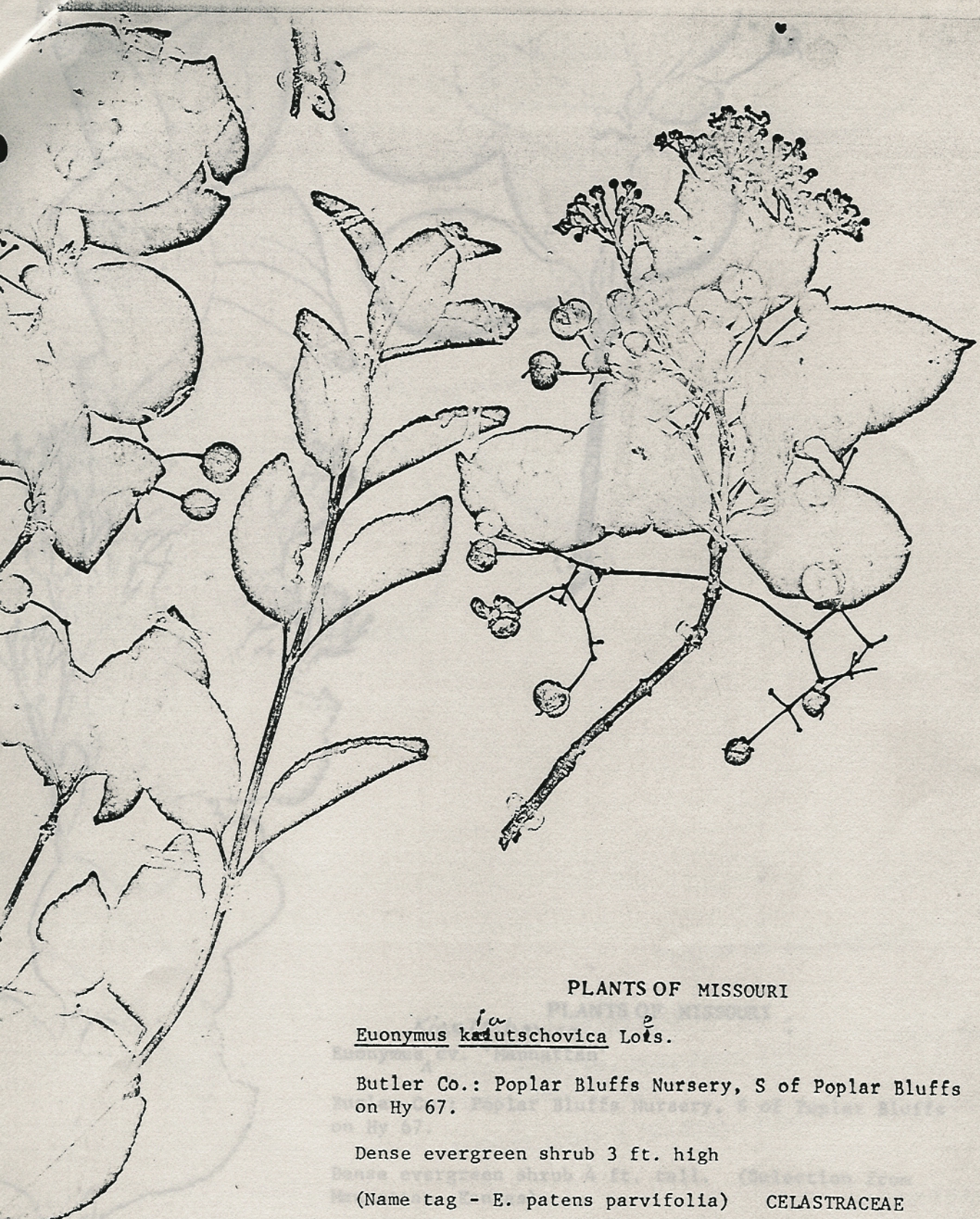
Glabrous shrub or small tree with *opposite lvs.*: fr. of 1-3 *leathery pods*, each with 1-3 *arillate seeds*. One species, in eastern Asia. (Greek: *eu*, well, and *staphis* vessel; referring to the shape of the dehiscent pod.)

1. *Euscaphis japonica* Dipp. 野鴨椿 (Yeh Ya Ch'un; Wild-duck Ailanthus) (R.M. 565). Shrub or tree, to 8 m.; fls. greenish white, V-VI; fr. red, VIII-IX. Japan; Central China; locally in An., Che., Ki., Ku. Woodland, forest. Fig. 217.

2. *Staphylea* Linn. BLADDER NUT 省沽油屬 (Shêng Ku Yu Shu)

Shrubs or small trees with striped bark and *opposite lvs.*: fr. an *inflated* and *membranous capsule*; *seeds without aril*. 11 species, in north temperate regions: 2 in China. (Greek: *staphyle*, grape, since the shape of the inflorescence was thought to resemble a cluster of grapes.)

1. *Staphylea bumalda* DC. 省沽油 (Shêng Ku Yu) (R.M. 565). Shrub, to 8 m.; fls. white, V-VI; fr. IX-X. Japan, China; locally in An., Che., Hup., Ki., Ku. Woodland. Fig. 218.



PLANTS OF MISSOURI

Euonymus ^{1a}~~katuschovica~~ ²Lot's.

Butler Co.: Poplar Bluffs Nursery, S of Poplar Bluffs
on Hy 67.

Dense evergreen shrub 3 ft. high

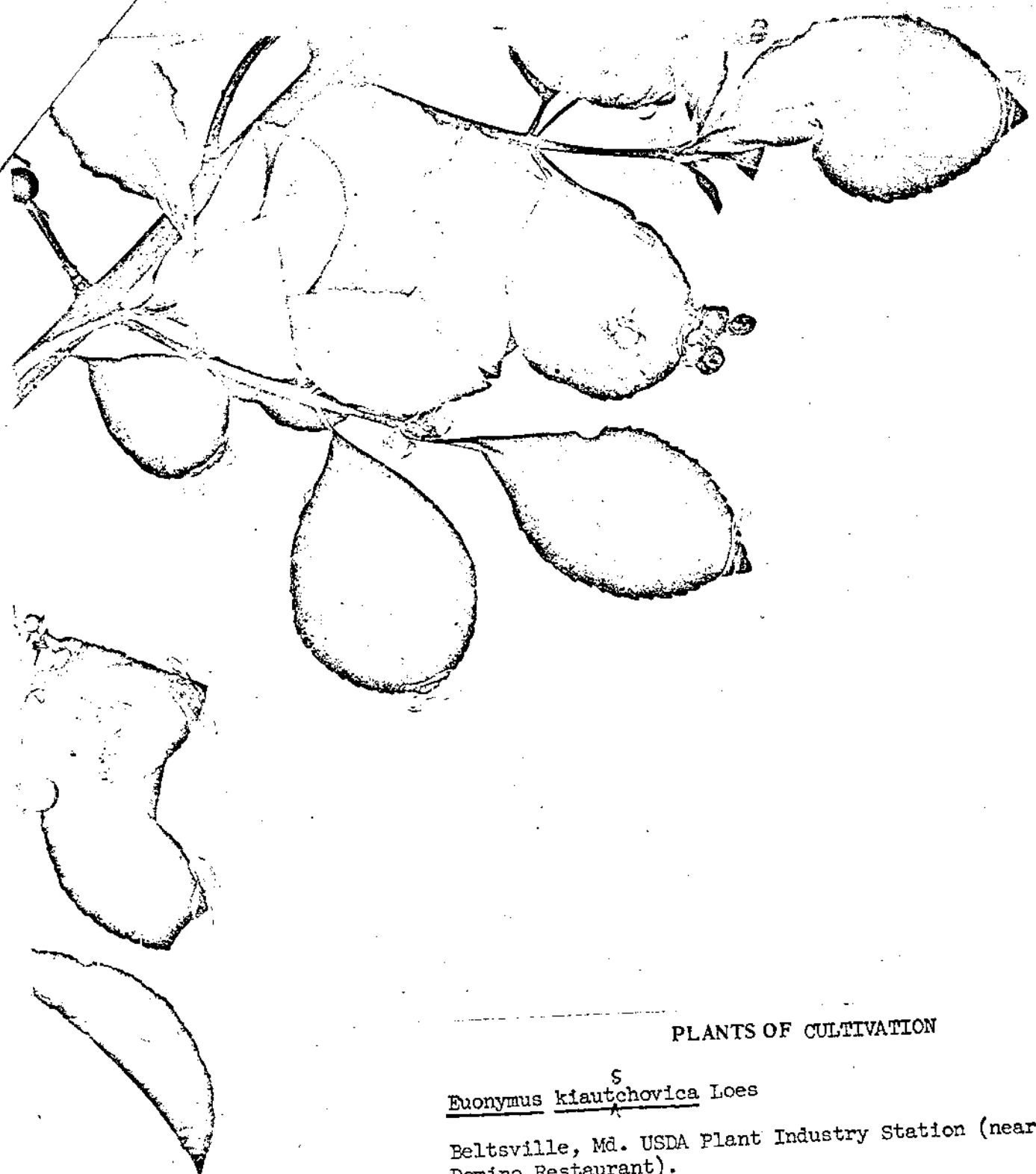
(Name tag - *E. patens parvifolia*) CELASTRACEAE

COLLECTOR C.B. Jones & L.A. Spetzman

NO. 37

DATE October 21, 1970

Voucher for sample collected by Agricultural Research Service, U. S. Department of Agriculture,
for the anti-cancer screening program of the Cancer Chemotherapy National Service Center,
National Cancer Institute.



PLANTS OF CULTIVATION

Euonymus ^Skiautschovica Loes

Beltsville, Md. USDA Plant Industry Station (near Domino Restaurant).

Planted shrub 6 ft. high, inner fruit pinkish.

COLLECTOR: L. Spetzman
NO: 1461

CELASTRACEAE

DATE: Nov. 1970

Voucher for sample collected by Agricultural Research Service, U. S. Department of Agriculture, for the anti-cancer screening program of the Cancer Chemotherapy National Service Center, National Cancer Institute.