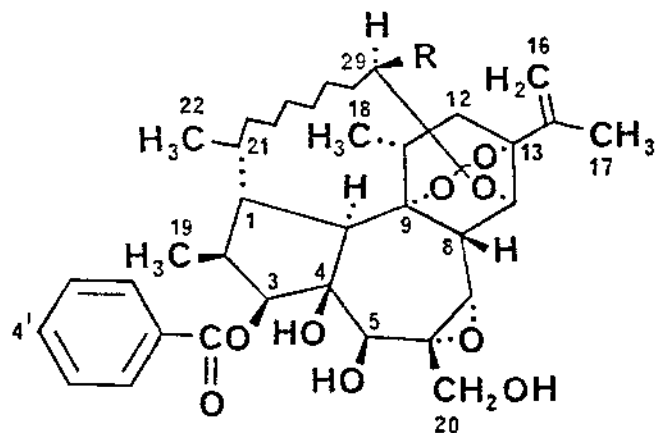


Table I - Antileukemic and Cytotoxic Activity of Dirca occidentalis Isolates<sup>a</sup>

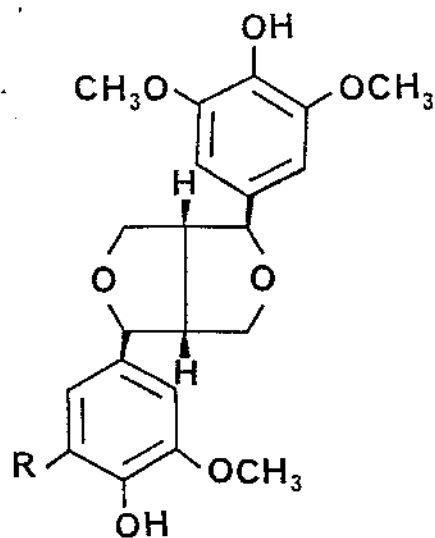
Compound	NSC-Number	P-388 <u>in vivo</u>		P-388 <u>in vitro</u> ED <sub>50</sub> , µg/ml
		Dose µg/kg	%T/C	
Pimelea factor P <sub>2</sub> (I)	334694	400	147	0.0000012
		200	127	
		100	110	
		50	116	
		25	110	
Dircin (II)	334696	125	156	0.00000025
		62.5	147	
		31.3	125	
(-)-Medioresinol (III)	329245	NT <sup>b</sup>		0.33
(+) -Syringaresinol (IV)	329246	2000	100	0.41
		1000	108	
		500	107	
		250	96	
(-)-Lariciresinol (V)	329247	NT <sup>b</sup>		0.23
Daphnoretin (VI)	291852	2000	107	3.5
		1000	100	
		500	95	
		250	100	

<sup>a</sup> Tested according to standard protocols (6). <sup>b</sup> NT = Not tested.



I R = H

II R = OCOCH<sub>3</sub>



III R = H

IV R = OCH<sub>3</sub>

